



INTRODUCING POLISHING HEAD

GRANITE - MM-6G

QUARTZ - MM-6Q

MARBLE - MM-6M

QUARTZ HEAD - MM-6Q

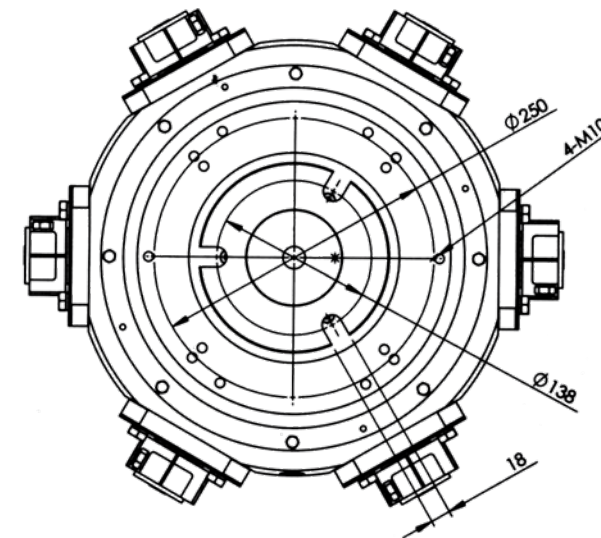
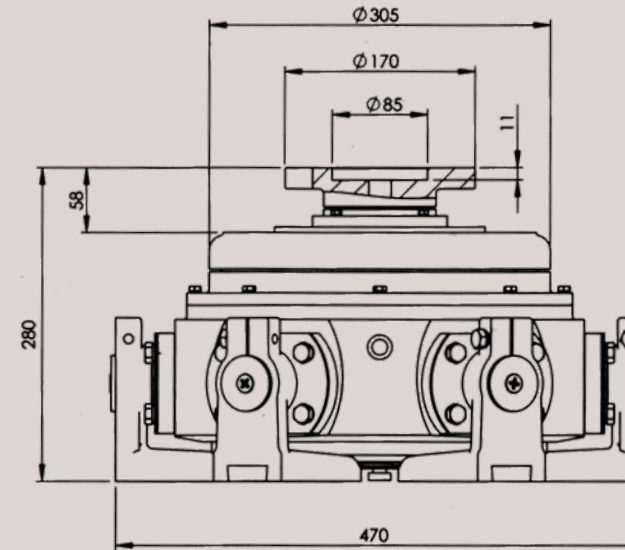


GRANITE - MM-6G

MARBLE HEAD - MM-6M



FICKERT HEAD



Double Function Polishing Head

Characterized by high polishing efficiency, excellent quality and easy maintaining, this model is among the best design in the market.

Characteristics:

Perfect cam designed by CAD System helps to ensure stable swing of the abrasive holder, reasonable swing frequency, high polishing quality and efficiency.

Excellent design with only 4 sets of bearings inside and without any easy wearing parts.

Stable running with very little noise.

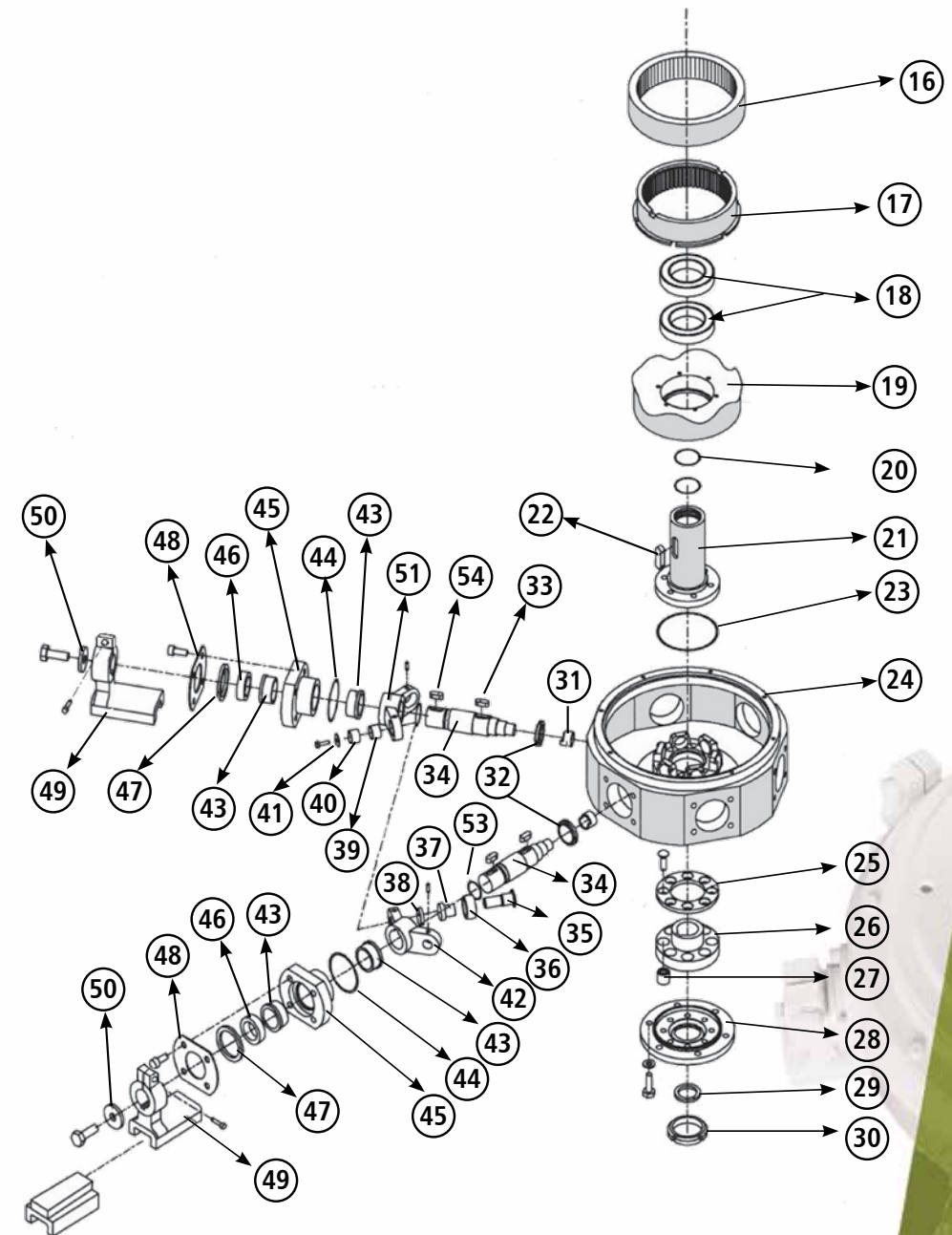
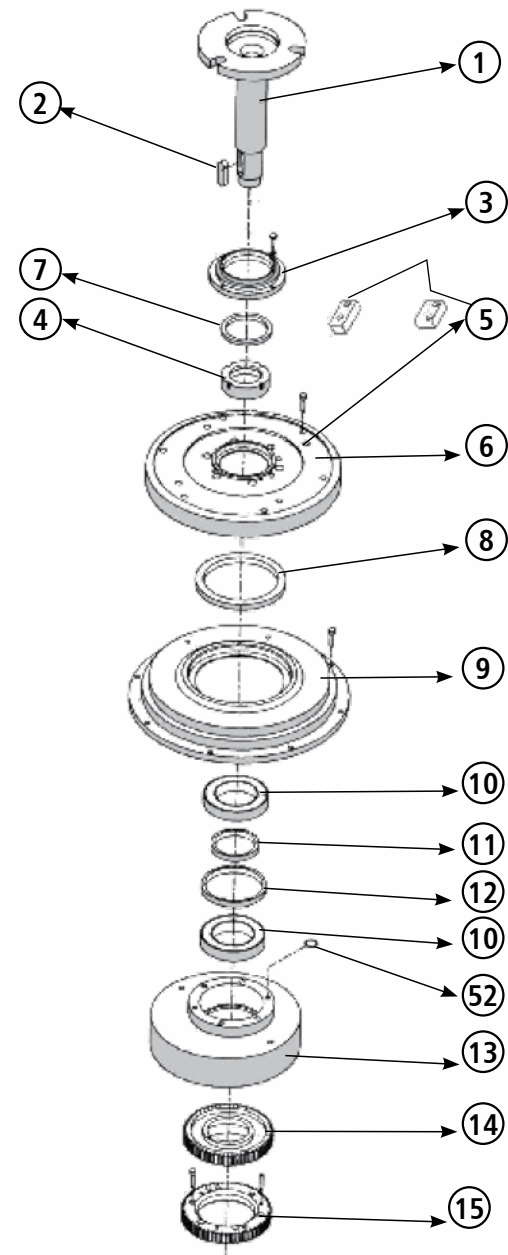
Compound sealing makes it more easy to maintain the product and extend the service life.

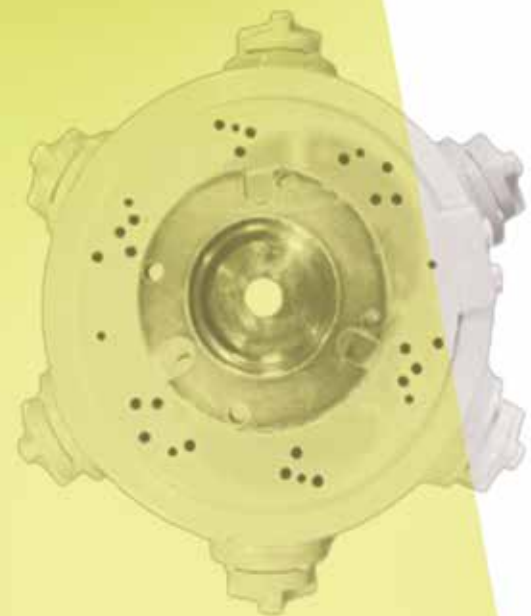
All the parts are designed by 3-dimension CAD system. Key parts are made by processing center with high precision to assure best quality.

Famous brand bearing and oil sealer are used.

Only one fitting can perform double function for polishing both marble and granite.

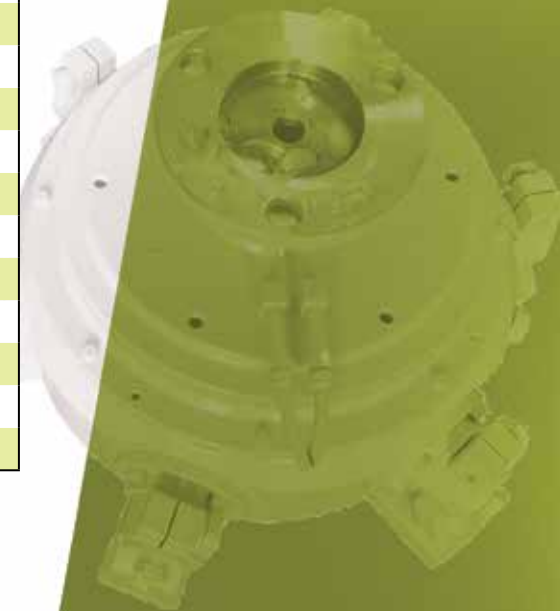
EXPLODED VIEW - MM-6G & MM-6Q





Pos. No.	DESCRIPTION	Qty.
1	Main shaft	1
2	Spline	1
3	Upper labyrinth	1
4	Upper ring	1
5	Greasing Blocks	1
	O ring	1
	Greasing nipple	2
	or fitting	1
6	Upper flange	1
7	O ring MIM	1
8	O ring MIM	1
9	Box Cover	1
10	Bearing	2
11	Spacer	1
12	Spacer	1
13	Cam body	1
14	Driving gear	1
15	Driving gear	1
16	Bearing	1
17	Planetary gear	1
18	Bearing	2
19	Cam	1
20	O ring	4
21	Main Sleeve	1
22	Spline	1
23	Ring	1
24	Box	1
25	Lower disc	1
26	Main Shaft hub	1
27	Shock absorbers	8

Pos. No.	DESCRIPTIONz	Qty.
28	Lower flange	1
29	Washer	1
30	Ring nut	1
31	Bronze bushing	6
32	Ring nut	6
33	Spline	12
34	Oscillating arm shaft	6
35	Shaft	6
36	Cam roller	6
37	Brass	6
38	Washer	6
39	Bushing	6
40	Ring	6
41	Washer	6
42	Main lever	3
43	Brass for shaft	12
44	O ring	6
45	Oscillating arms support	6
46	Ring	6
47	O ring MIM	6
48	Guard	6
49	Arm	6
50	Locking ring	6
51	Driven lever	3
52	OR ring	1
53	OR ring	6
54	Spline	6





REGISTERED OFFICE

12/3, Rabindra Sarani, Liluah, Howrah - 711204

P: +91 33 2645 2935

E: sbenterprise@hotmail.com, info1@sbenterp.com

W: www.sbenterp.com

BANGALORE BRANCH

M/s, S.B.Spares Solutions

50/17, Kachnayakanahalli, Near Bangalore Paints

Bommsandra Indl. Area, Anakal Taluk, Bangalore - 560099, Karnataka

M: +91 96324 78849, **E:** sbss1979@gmail.com

W: www.sbenterp.com

NORTH INDIA REPRESENTATIVE

S.B. Enterprises

B-151, Indra Nagar, Phase - II, Kishangarh, Ajmer - 305801, Rajasthan

M: +91 93584 80180, **E:** sbenterpraj@gmail.com, **W:** www.sbenterp.com

KARIMNAGAR REPRESENTATIVE

Adya Spares

1-100/5/A, Asifnagar, Kothapally, Karimnagar - 505401, Telangana

M: +91 76191 88300, **W:** www.sbenterp.com

NB: for further details, you can visit our website www.sbenterp.com